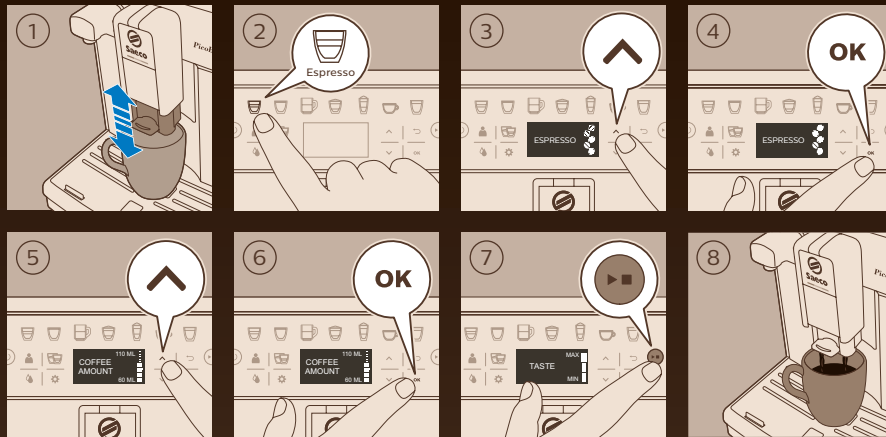
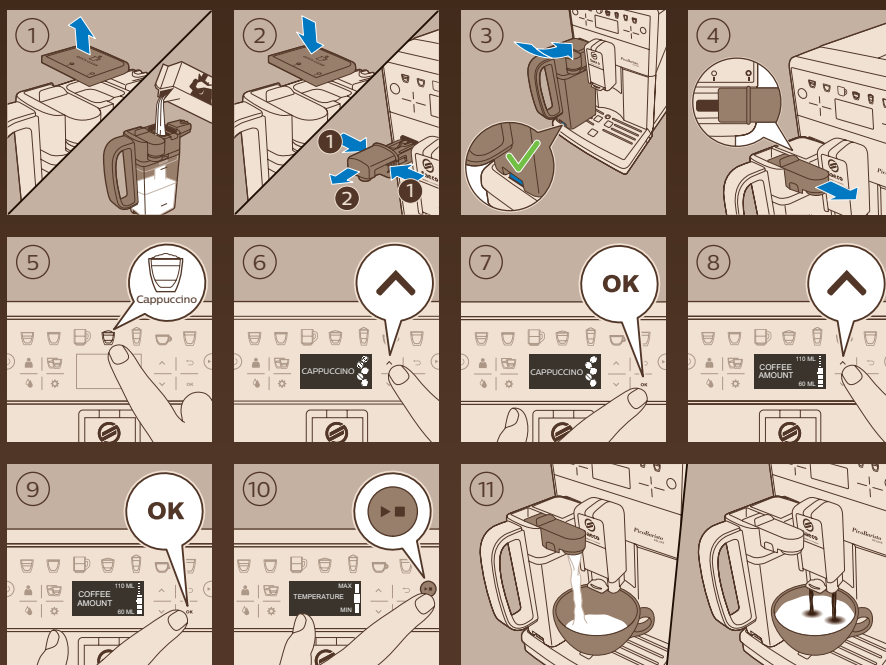


 ESPRESSO



 CAPPUCCINO



www.saeco.com/care

4219.440.7806.3





PicoBaristo
DELUXE

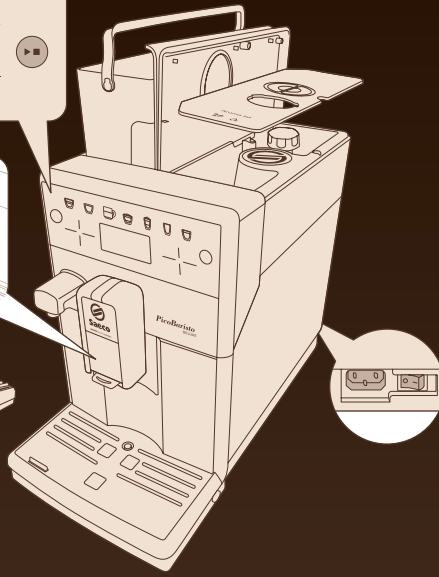
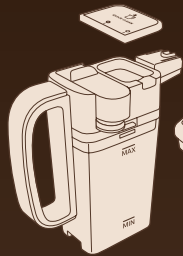
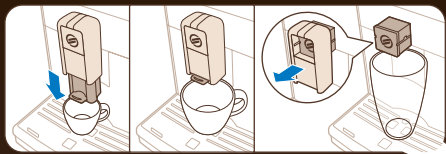


WWW.SAECO.COM/CARE

SM5573, SM5572, SM5570

PHILIPS

Saeco, a Philips brand



BEFORE FIRST USE

1. Plug the power cord into the power outlet.
2. Turn the power switch on.
3. Select the language: ENGLISH, DEUTSCH DE, DEUTSCH AT, FRANÇAIS.
4. Press OK to confirm the language selection.
5. Remove the top cover.
6. Fill the water filter housing with water up to the MAX level.
7. Insert the water filter housing into the machine.
8. Place a cup under the spout.
9. Press the power button to start the initial rinse cycle.
10. The machine dispenses water into the cup.
11. Text: "WOULD YOU LIKE TO SET THE AQUACLEAN FILTER TO ENJOY 5000 CUPS WITHOUT DESCALING?"

12. AquaClean filter is shown.
13. Press the power button for 5 seconds.
14. The machine dispenses water into a cup for 30 seconds.
15. Press OK.
16. The machine dispenses water into a cup up to the MAX level.
17. The machine dispenses water into a cup.
18. Place a container under the spout.
19. Press OK.
20. ACTIVATING FILTER progress bar.
21. The machine dispenses water into a cup.
22. Text: "IN THE NEXT STEPS WE WILL SET THE CORRECT WATER HARDNESS LEVEL".
23. Press OK.
24. The machine dispenses water into a cup.
25. The machine dispenses water into a cup for 1 second.
26. The machine dispenses water into a cup for 1 minute.
27. Press the up arrow button.
28. Press OK.
29. RINSING HEATING UP... progress bar.
30. The machine dispenses water into a cup.
31. The machine dispenses water into a cup.
32. Press the down arrow button.
33. QR code for more information.

www.saeco.com/care

www.saeco.com/care